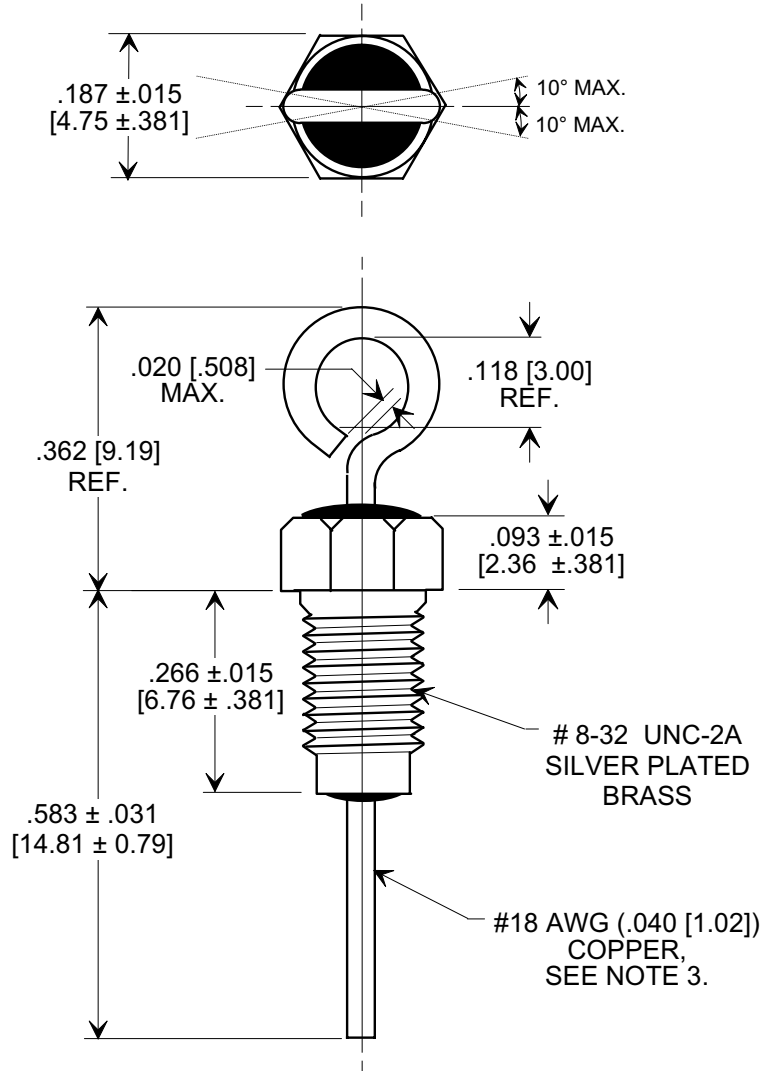
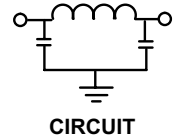
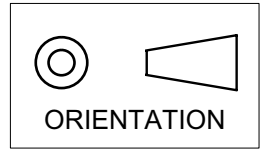


MARKETING SALES DRAWING

DIMENSIONS IN INCHES - DO NOT SCALE THIS DRAWING
DIMENSIONS IN METRIC - []

Electrical Testing
 per Tusonix standard
 test plans and Mil-Std-202
 Test Methods.



NOTES:

- TUSONIX STANDARD PART NUMBER: 4251-010.
 TUSONIX RoHS COMPLIANT PART NUMBER: 4251-010 LF.
 CUSTOMER MUST SPECIFY STANDARD OR RoHS PART NUMBER WHEN ORDERING.
- SUPPLIED WITH SILVER PLATED HEX NUT AND LOCK WASHER.
- LEAD FINISH: STANDARD PART #: 60/40 SOLDER PLATED. RoHS PART #: MATTE TIN PLATED.
- MARKING: TUSONIX TRADEMARK (TM) AND VARIATION NUMBER, STAMPED ON BUSHING HEX FLATS. STANDARD PART: BLACK INK. RoHS PART: GREEN INK.

15,000	100 VDC	50 VDC	15 A	250 VDC	10 G	5	9	18	45	65	70	70
MIN. CAP.(pf)	+85°C	+125°C	CURRENT	DWV	I.R. MIN. @ 100 VDC	1 MHz	3 MHz	10 MHz	30 MHz	100 MHz	300 MHz	1GHz
	DC WORKING VOLTAGE					MINIMUM NO LOAD INSERTION LOSS (dB) AT 25°C PER MIL-STD-220						

X-2015 Rev-0	REVISION RECORD		0 DWV 250 WAS 125. S.M. 09-22-03 1 REVISED NOTES. S.M. 08-19-05 2 20050818-9-01	--TOLERANCES-- Unless Otherwise Specified	Title BUSHING MOUNT PI TYPE EMI FILTER		
	Original Release C.O.	WAS SK 7458-003		DECIMAL ± //	Drawn L.E. 02-14-03	Scale 4X	
	L.E. 03-04-03	20030228-5-06		ANGLES ± //	Approved B.Mc. 02-14-03		
	20030922-5-02	20050818-9-01		TUSONIX TUCSON, ARIZONA		A	4251-010